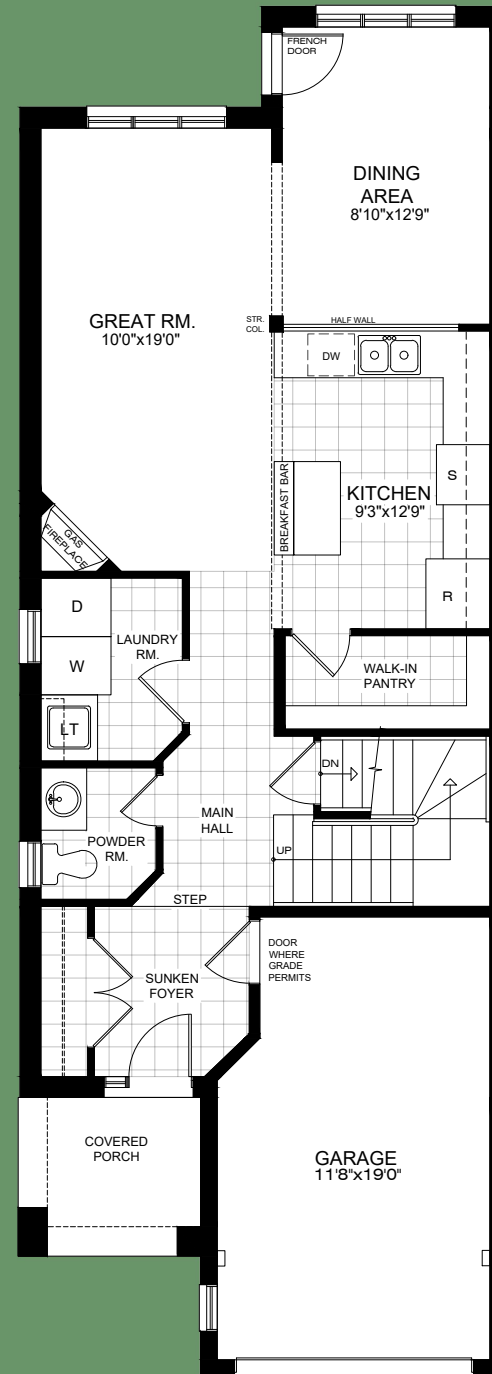
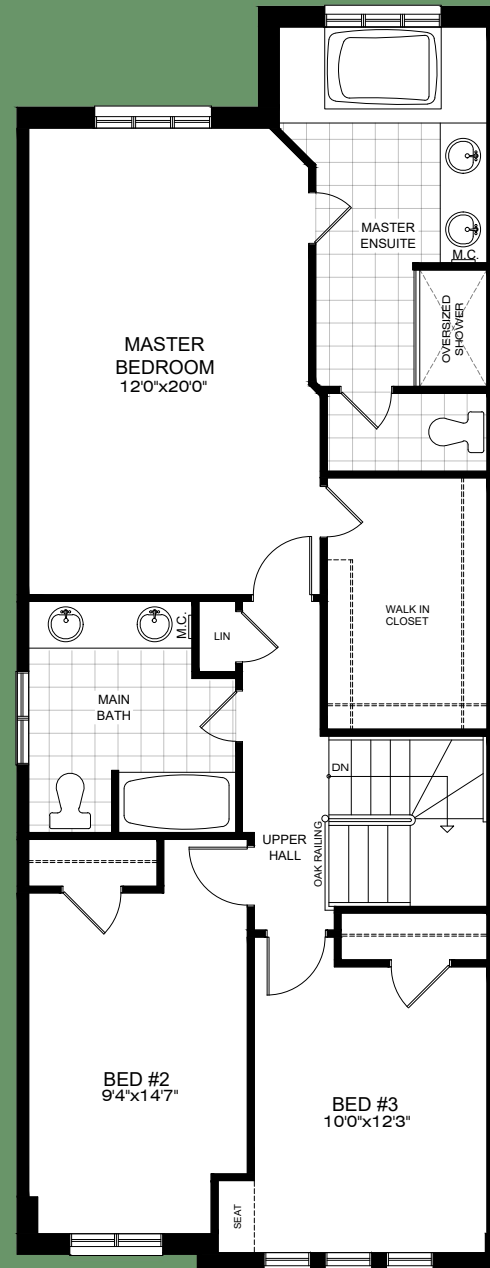


THE ASHFORD

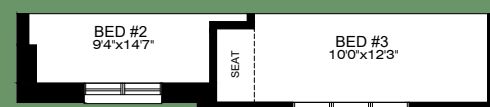
ELEVATION 'A'(L) & 'B' (L/R) = 1,894 SQ. FT. / ELEVATION 'A'(R) = 1,889 SQ.FT.



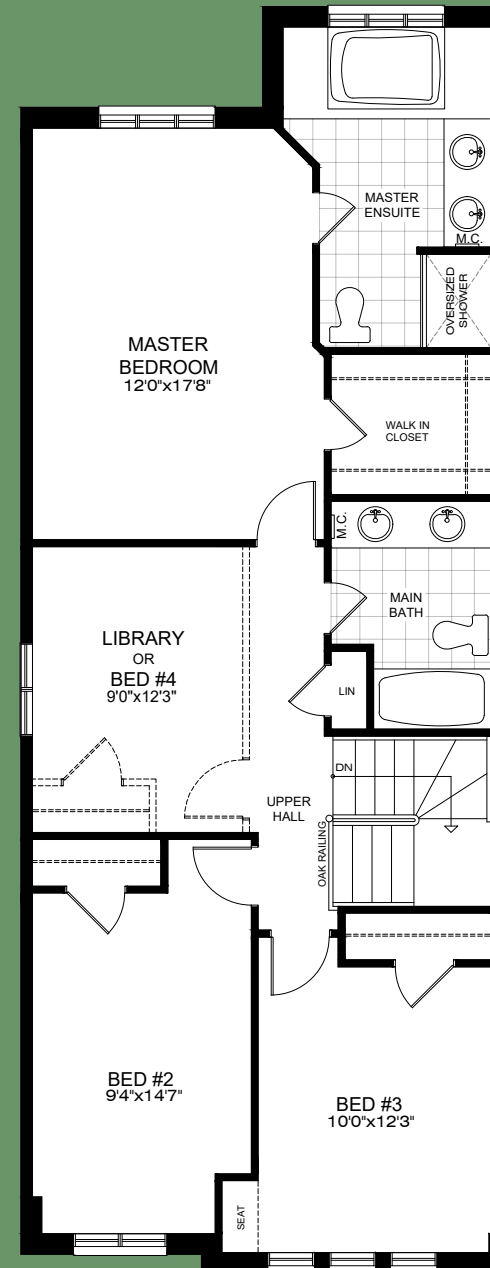
MAIN FLOOR PLAN
ELEVATION 'A'



SECOND FLOOR PLAN
ELEVATION 'A'(L)
(3 BEDROOM)



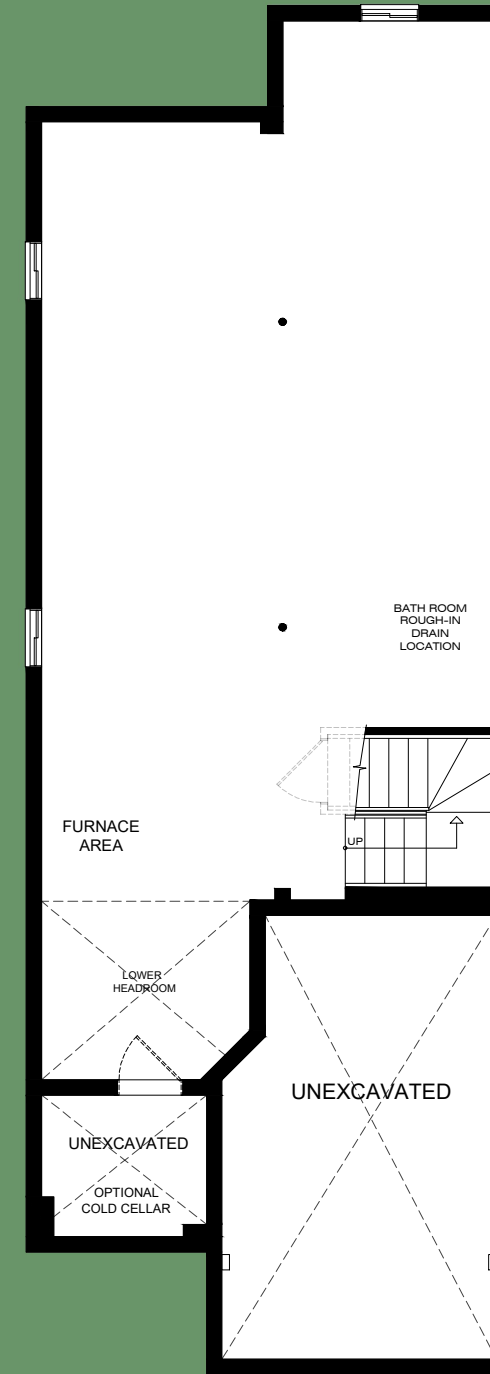
SECOND FLOOR PLAN
ELEVATION 'B'(L,R)



OPT. SECOND FLOOR PLAN
ELEVATION 'A'(L)
(4 BEDROOM)



SECOND FLOOR PLAN
ELEVATION 'A'(R)
(4 BEDROOM)



BASEMENT PLAN
ELEVATION 'A'
UNFINISHED BASEMENT

